

- JSP 319 calls for safe distances to be applied to the siting of the facility these are noted below:
- Minimum safety distance
- 70m • Operation of Bowman radio - HF radios
 - 50m • Public road and railways
 - 25m • Flammable liquid/gases storage, aircraft parking, refuelling and de/elling
 - 15m • Parked vehicles
 - Traffic routes
 - Compostible solid materials
 - Any inlet to the public sewerage system
 - Buildings
 - Aircraft taxiways
 - Asphalt surface
 - Meadow
 - Property boundary
 - Non-intrinsic mobile phones and other devices fitted with batteries
 - Fire open flame, light, smoking areas
 - Operation of Bowmans radio: VHF & UHF radios

TOWN PLANNING AND
BUILDING CONTROL
18 MAR 2014
RECEIVED

PRELIMINARY

P3	Building repositioned following MOD comments sent 23/7/13	AL	NM	05/09/13
P2	Building and road names indicated	AJ	NM	05/08/10
P1	First issue of drawing	AJ	NM	14/07/10
Rev.	Revision description	Drawn	Checked	Date

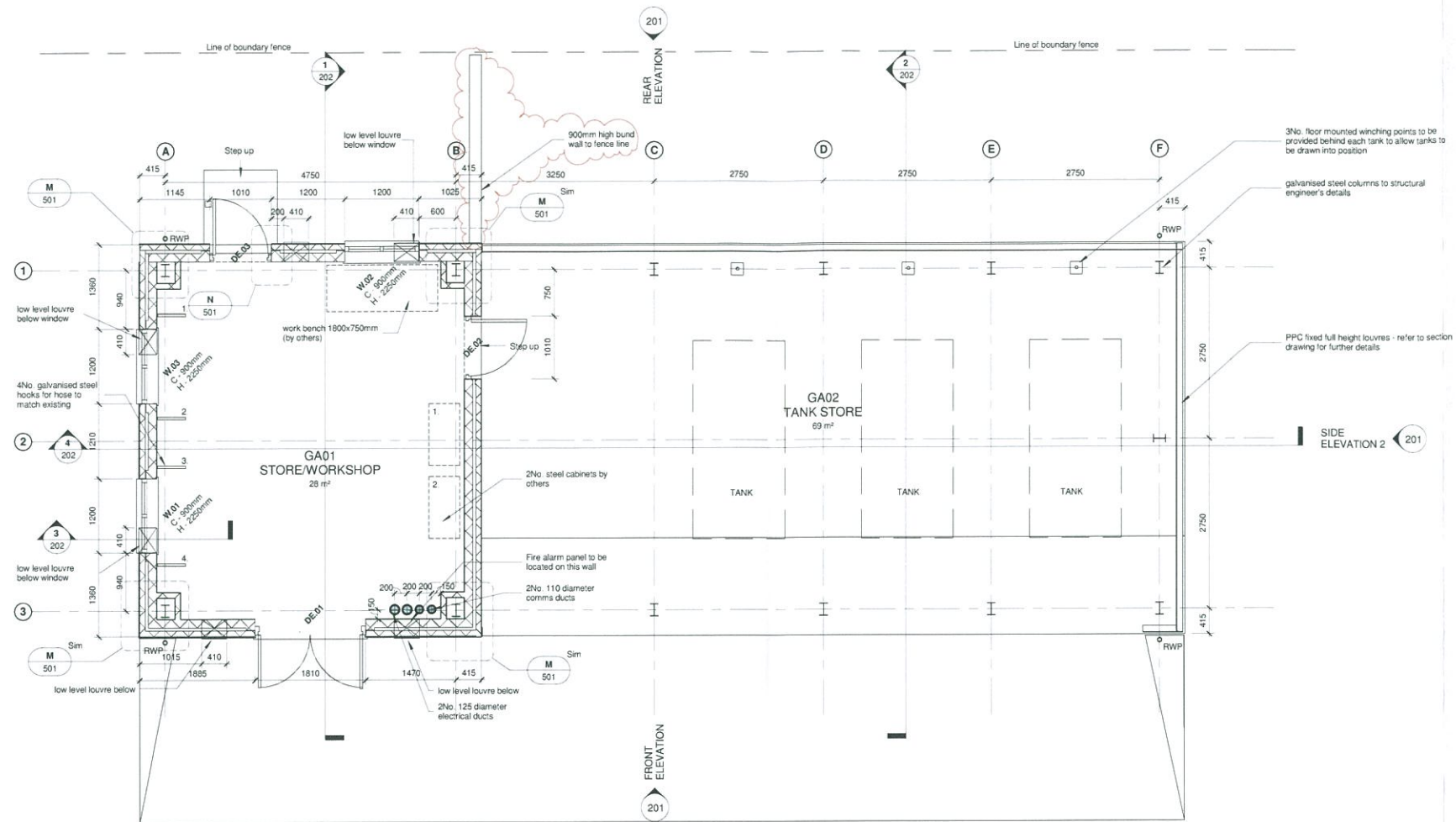
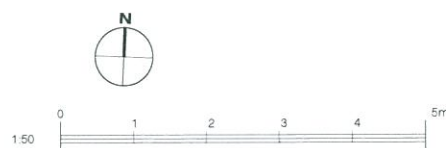
lovelock mitchell
ARCHITECTS

Lovell Mitchell Architects
3 Stanley Street Chester CH1 2LS
Tel +44 (0) 1244 404321
Fax +44 (0) 1244 404340
e-mail: admin@lovelockmitchell.com
web: www.lovelockmitchell.com

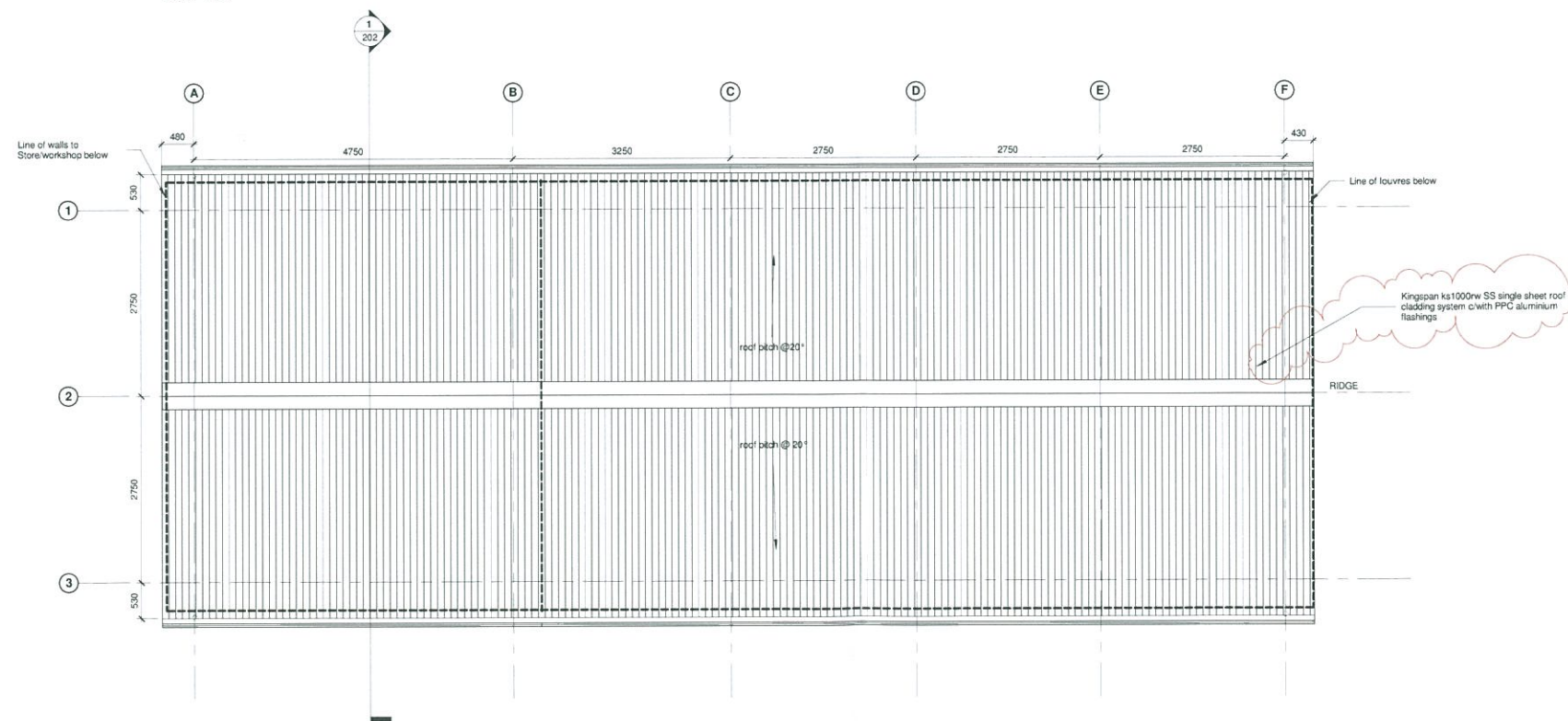
Project
British Lines LOx Store Gibraltar

Title
Site Location Plan

Scale @ A1	Checked By	Date
As indicated	AJ	NM
Job No.	Sheet No.	Rev.
08-49	103	P3



Floor Plan
Scale: 1 : 50



Roof Plan
Scale: 1 : 50

- NOTES:**
For plan details refer to LMA drawing no. 500.
- ROOF CONSTRUCTION:**
Kingspan ks1000w SS single sheet roof cladding system or similar approved, over galvanised steel purlins to steel rafters, (all to structural engineer's details).
Gutters to be plastic faced galvanised steel hi-line type with matching 100mm square downpipes.
- FINISHES:**
STORE / WORKSHOP
FLOOR: concrete to be coated with safety coat epoxy resin containing line particles embedded in the tough epoxy resin coating enhancing safety and traction with chemical and wear resistant properties.
SKIRTINGS: epoxy - safety coat paint to be taken up wall to continue protection and act as dust sealer, exact height to be confirmed on site to suite blockwork level (1 course) min 150mm.
WALLS: new fair faced blockwork walls to be painted with a cleanable / hard wearing paint finish, engineering brickwork to external leaf at low level, external finish to be rendered system.
CEILING: exposed inner face of insulated composite profiled roof panel.
- TANK STORE**
FLOOR: concrete floor slab with brushed finish and towelled edge margin.
SKIRTINGS: n/a
WALLS: open area to main elevation, 2 sides of area to have open bladed louvres for full height.
CEILING: n/a
- FITTINGS:**
STORE / WORKSHOP
1no. emergency drench shower to be fitted externally
1no. externally mounted fire hose to be provided adjacent to entrance gates.
- SIGNAGE:**
Signage to be provided to the building which indicates:
A. Liquid Oxygen
B. Oxidising Substance
C. No Smoking
D. No Naked Lights
E. No Storage of Oil/ Grease or combustible materials
F. Extreme Cold Hazard
G. Authorised Persons Only
H. No Mobile Phones
J. No Steel Tipped Shoes/ Boots.

PRELIMINARY

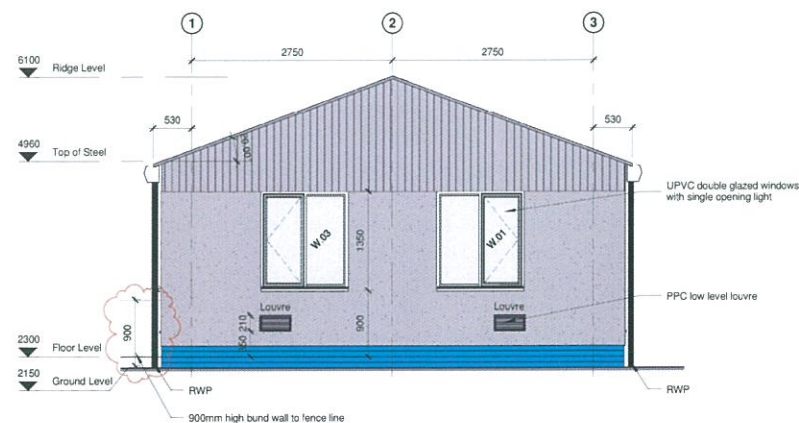
P3	Alterations following MOD comments sent 23/7/13	AL	NM	05.09.13
P2	Step to rear of building added, ducts indicated, notes added	AJ	NM	09.08.10
P1	Preliminary issue of drawing	AJ	NM	11.05.10
Rev.	Revision description	Drawn	Checked	Date



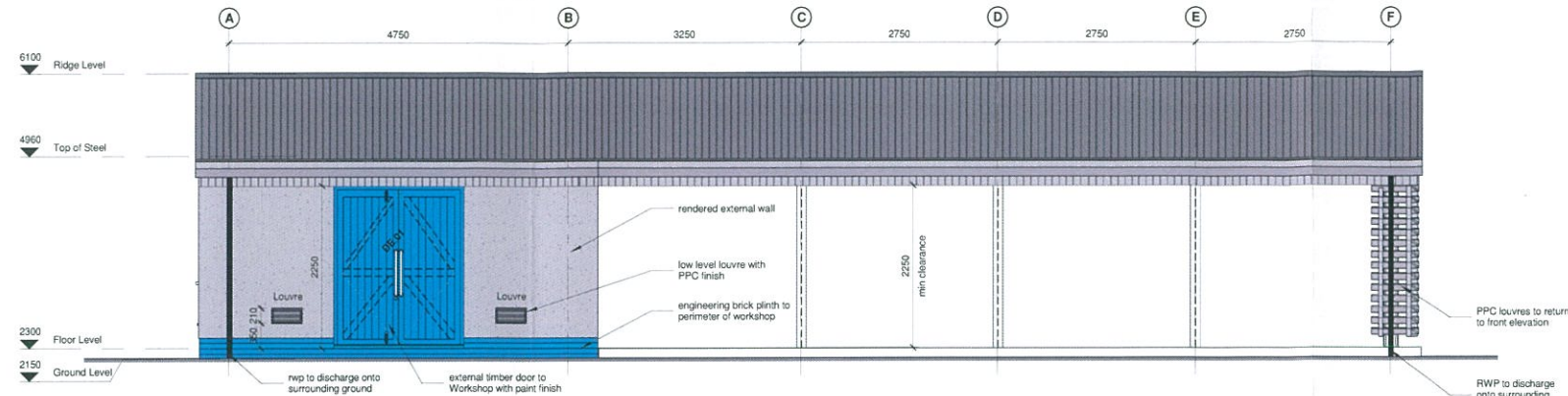
Project
British Lines LOx Store Gibraltar

Title
Ground Floor & Roof Plan as Proposed

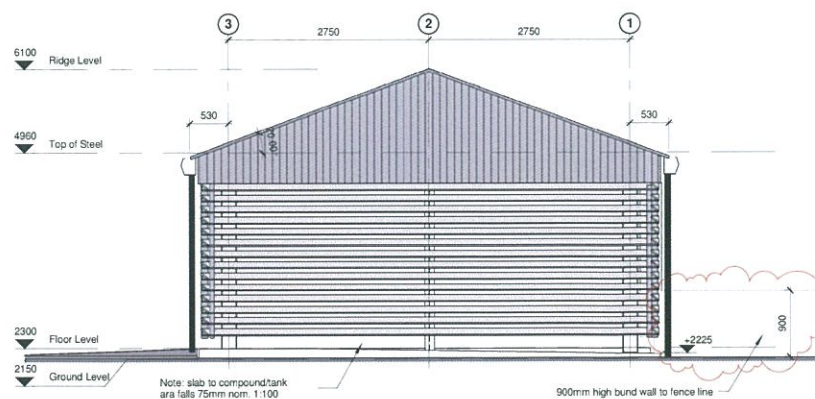
Scale @ A1	Checked By	Date
1 : 50	RS	03/18/10
Job No.	Sheet No.	Rev.
Drawing Number 08-49	200	P3



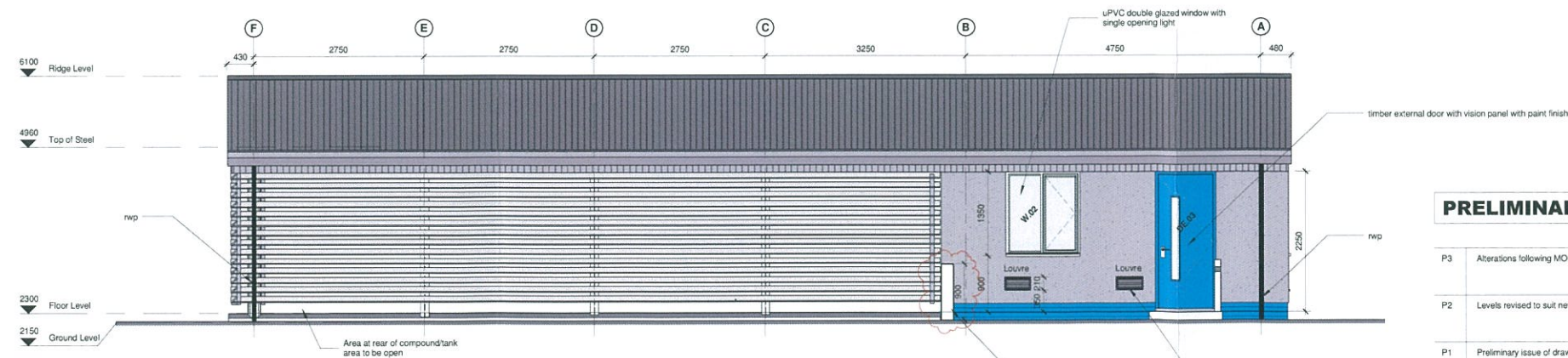
SIDE ELEVATION 1
Scale: 1 : 50



FRONT ELEVATION
Scale: 1 : 50



SIDE ELEVATION 2
Scale: 1 : 50



REAR ELEVATION
Scale: 1 : 50

Materials:
Roof:
Kingspan ks1000w SS single sheet roof cladding system;
metal box gutters and downpipes
Walls:
Store/Workshop: Fair faced blockwork walls external
finish to be render system. Tank Store: open area to main
elevation, 2 sides of area to have open bladed louvres for
full height.
Doors:
Double doors: external quality timber, suitable for painting
Single doors: external quality timber with louvred section
at low level to doors between Workshop and Compound.
Single doors: external quality timber with full length vision
panel.
Windows:
UPVC double glazed.

**TOWN PLANNING AND
BUILDING CONTROL**
18 MAR 2014
RECEIVED

PRELIMINARY

Rev.	Revision description	Drawn	Checked	Date
P3	Alterations following MOD comments sent 23/7/13	AL	NM	05/09/13
P2	Levels revised to suit new location. Colour of doors amended	AJ	NM	09/05/10
P1	Preliminary issue of drawing	AJ	NM	11/05/10

lovelock mitchell
ARCHITECTS
Lovelock Mitchell Architects
3 Stanley Street Chester CH1 2LS
Tel +44 (0) 1244 404321
Fax +44 (0) 1244 404340
e-mail: admin@lovelockmitchell.com
web: www.lovelockmitchell.com

Project
British Lines LOx Store Gibraltar

Title
Elevations as Proposed

Scale @ A1	Checked By	Date
1 : 50	AJ	NM
Job No.	Sheet No.	Rev.
08-49	201	P3



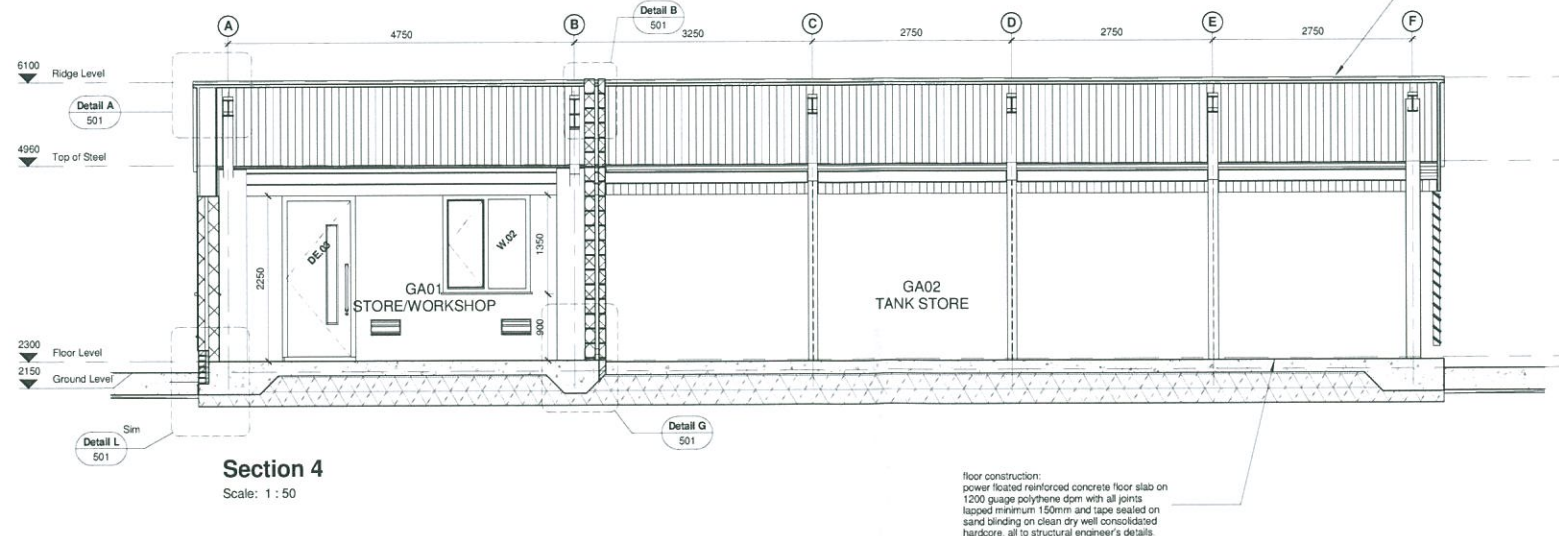
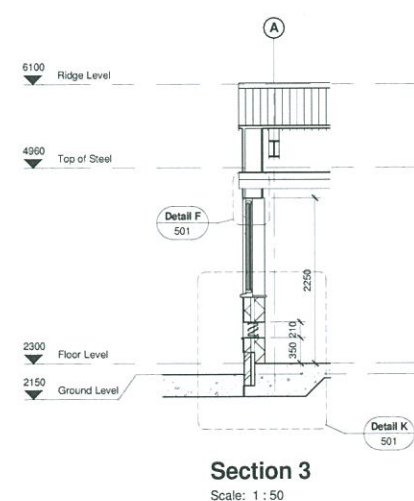
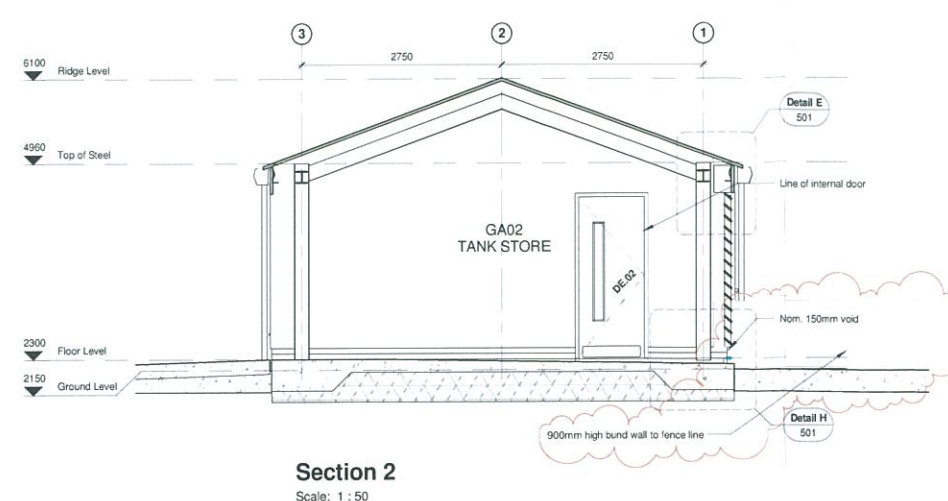
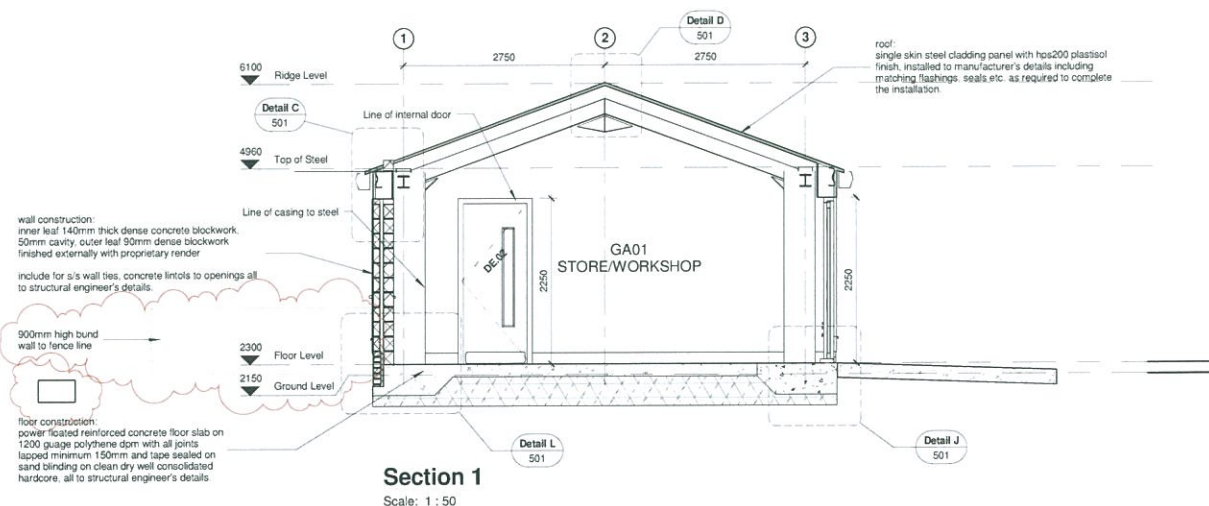
GENERAL NOTES

Refer to structural engineers drawing for details of all steelwork throughout

Concrete floor slabs to structural engineers details

This drawing is to be read in conjunction with the following drawing numbers:

- 200 - G.A floor and roof plan
- 501 - section details
- external openings
- lower schedule and details



TOWN PLANNING AND
BUILDING CONTROL
18 MAR 2014
RECEIVED

PRELIMINARY

P3	Alterations following MOD comments sent 23/7/13	AL	NM	05/05/13
P2	Levels amended to suit revised position of building	AJ	NM	09/08/10
P1	Preliminary issue of drawing	AJ	NM	11/05/10
Rev.	Revision description	Drawn	Checked	Date

lovelock mitchell
3 Stanley Street, Chester, CH1 2LS
Tel: +44 (0) 1244 404321
Fax: +44 (0) 1244 404340
e-mail: admin@lovelockmitchell.com
web: www.lovelockmitchell.com

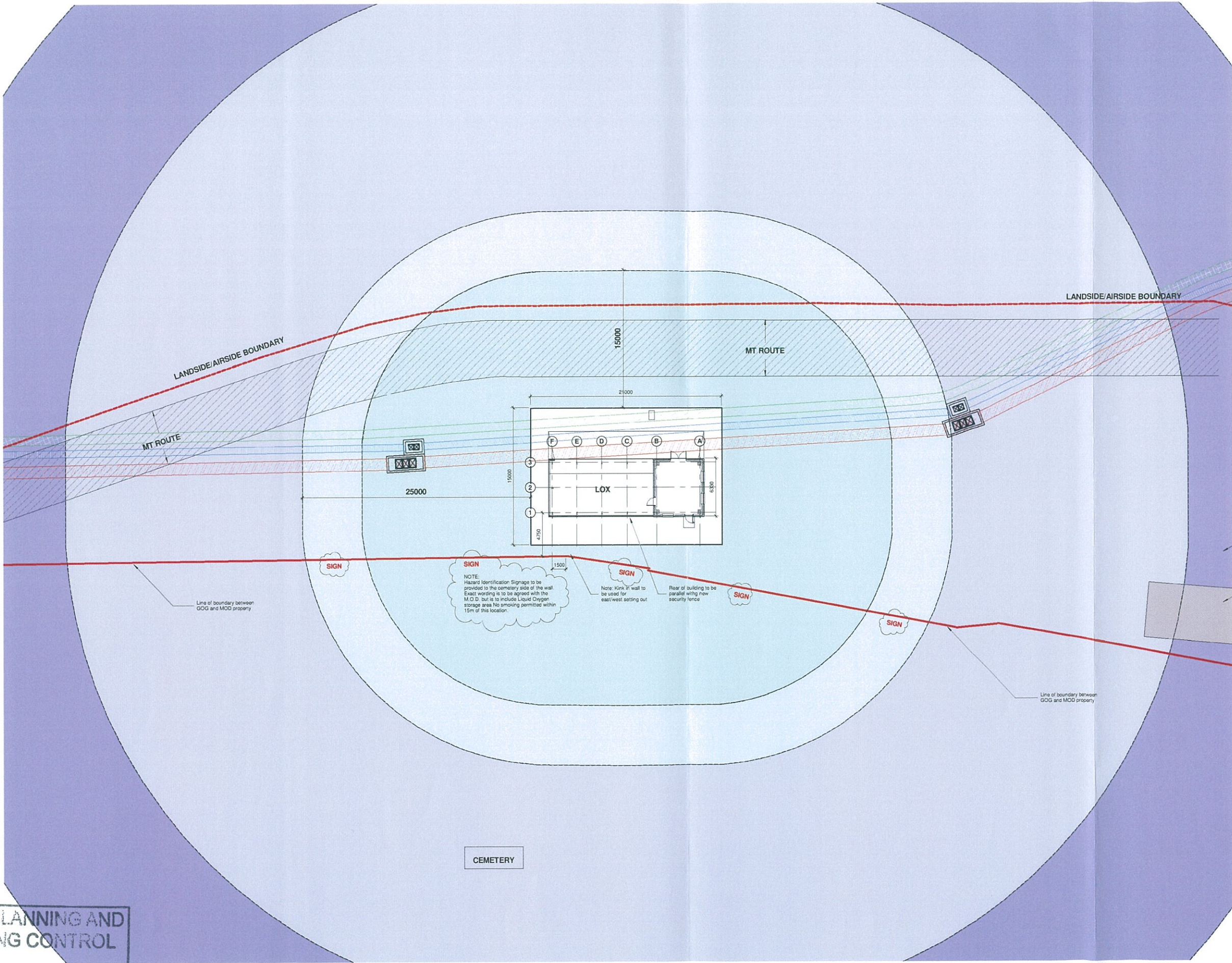
Project
British Lines LOx Store Gibraltar

Title
Sections as Proposed

Scale @ A1	Checked By	Date
1 : 50	AJ NM	18.03.10
Job No.	Sheet No.	Rev.
08-49	202	P3



TOWN PLANNING AND
BUILDING CONTROL
18 MAR 2014
RECEIVED



- JSP 319 calls for safe distances to be applied to the siting of the facility these are noted below:
- Minimum safety distance
- 70m - Operation of Bowman radio - HF radios
 - 50m - Public road and railways
 - 25m - Flammable liquid/gases storage, aircraft parking, refuelling and defuelling
 - 15m -
 - Parked vehicles
 - Traffic routes
 - Combustible solid materials
 - Any inlet to the public sewerage system
 - Buildings
 - Aircraft taxiways
 - Asphalt surface
 - Meadow
 - Property boundary
 - Non-intrinsic mobile phones and other devices fitted with batteries
 - Fire, open flame, light, smoking areas
 - Operation of Bowman's radio - VHF & UHF radios

- Service corridor (by others)
- Rising main trench
 - Telecom trench
 - Electric trench
- 2.25 Existing levels
- 2.45 Proposed levels

Note:
All existing services within the vicinity of the LOx building and compound are required to be surveyed to establish the exact service and route

PRELIMINARY

P4	Additional notes added, setting out information added, floor levels added	AJ	NM	05.08.10
P3	Additional notes added, setting out information added, floor levels added	AJ	NM	15.07.10
P2	Scale amended	AJ	NM	14.07.10
P1	First issue of drawing	AJ	NM	17.05.10
Rev.	Revision description	Drawn	Checked	Date

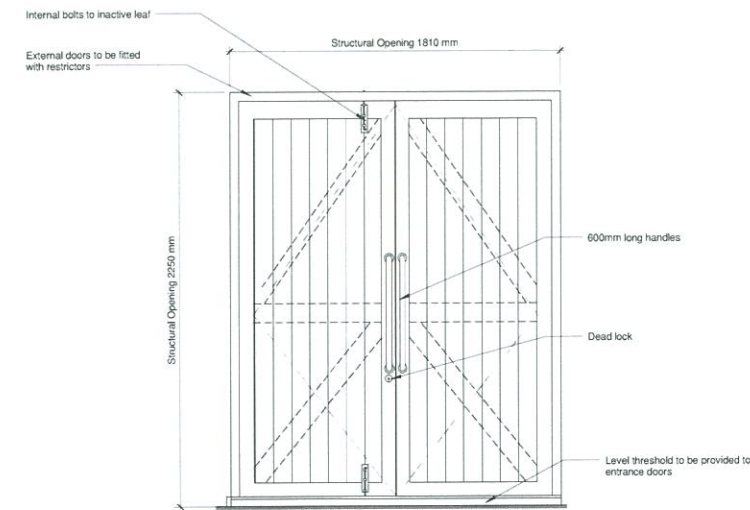
lovelock mitchell
Lovelock Mitchell Architects
3 Stanley Street Chester CH1 2LS
Tel +44 (0) 1244 404331
Fax +44 (0) 1244 404340
e-mail: admin@lovelockmitchell.com
web: www.lovelockmitchell.com

Project
British Lines LOx Store Gibraltar

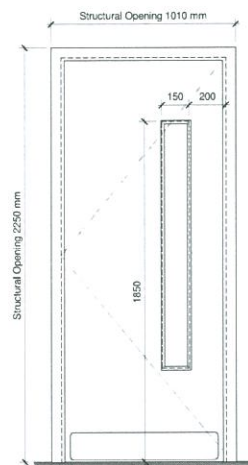
Title
Siting board drawing

Scale @ A1	Checked By	Date
1 : 200	AJ	NM
Job No.	Sheet No.	Rev.
08-49	102	P4

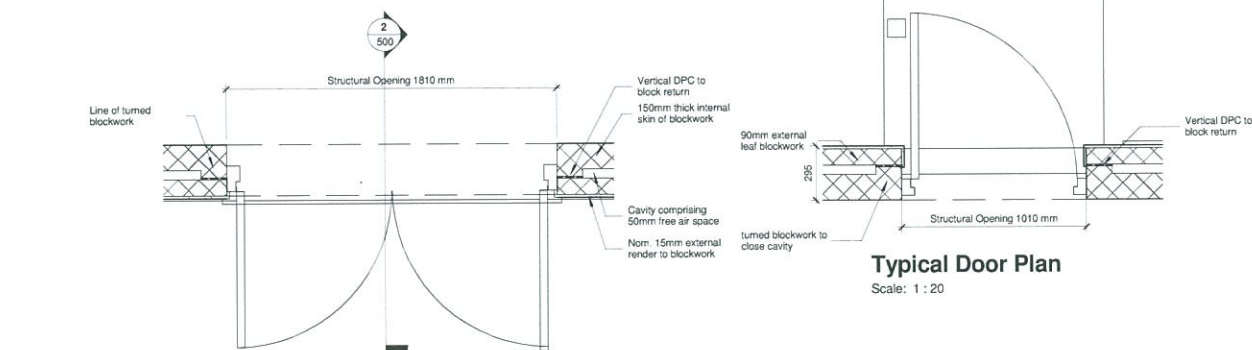
Door & Ironmongery Schedule																								
Door No.	Location	Door Type	Frame Type	Structural Opening		Fire Rating	Leaf Size Nom. (mm)			Vision Panel		Meeting Stiles	Hinges	Closer	Pull Handle	Pushplate	Lever Handle	Kickplate	Flush Bolt	Mortice Sash Lock	Mortice deadlock	Mortice Latch	Thumb Turn	Notes
				Width	Height		Width		Height	Width	Height													
							Primary	Secondary																
Floor Level																								
DE 01	STORE/WORKSHOP	A	timber	1810	2250		852		2140	150	1350	Meeting	3 Pairs		2	2	None	None	2No (inactive leaf)		*		*	Pull handles to be 600mm long
DE 02	STORE/WORKSHOP	F	timber	1010	2250	60	907		2140	150	1350	N/A	11/2 Pairs	1			1	1	None	*			*	
DE 03	STORE/WORKSHOP	B	timber	1010	2250		907		2140	150	1350	N/A	11/2 Pairs	1			1	1	None	*			*	



Door Type A - External Door
Scale: 1 : 20

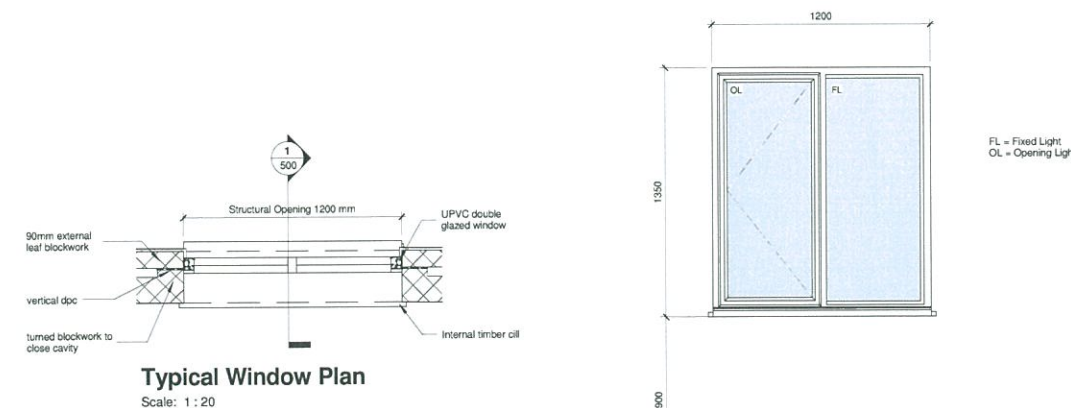


Door Type B - External Door
Scale: 1 : 20

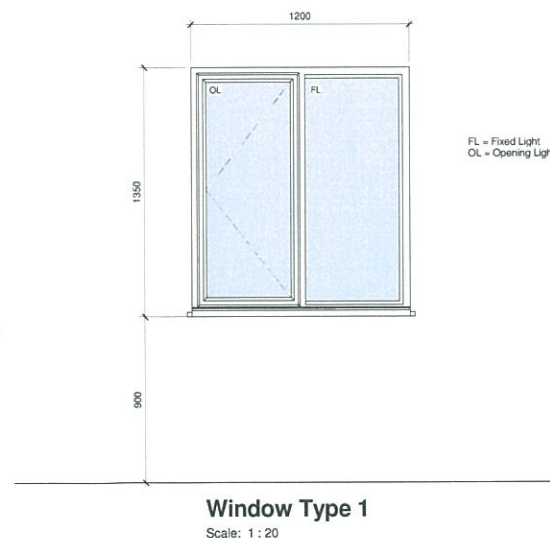


Double Door Plan
Scale: 1 : 20

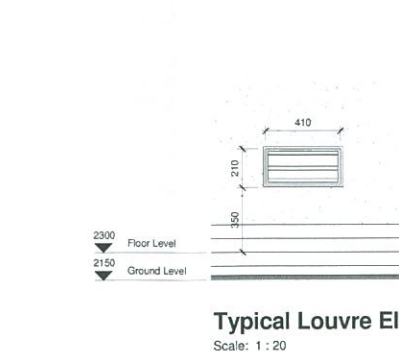
Window Schedule										
Window No.	Window Type	Location	Structural Opening Width	Structural Opening Height	Head Height	Sill Height	Wall Thickness	Fire Rating	Lintel Length	Frame Finish
W 01	1	STORE/WORKSHOP	1200	1350	2250	900	295	N/A	1490	UPVC - White
W 02	1	STORE/WORKSHOP	1200	1350	2250	900	295	N/A	1490	UPVC - White
W 03	1	STORE/WORKSHOP	1200	1350	2250	900	295	N/A	1490	UPVC - White



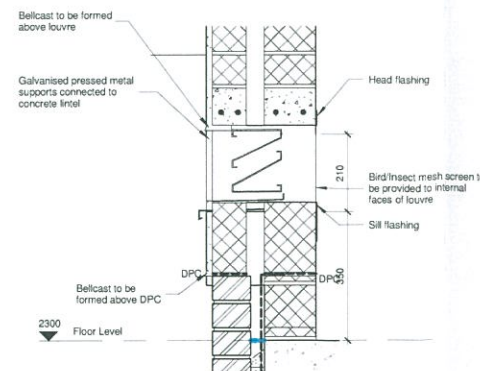
Typical Window Plan
Scale: 1 : 20



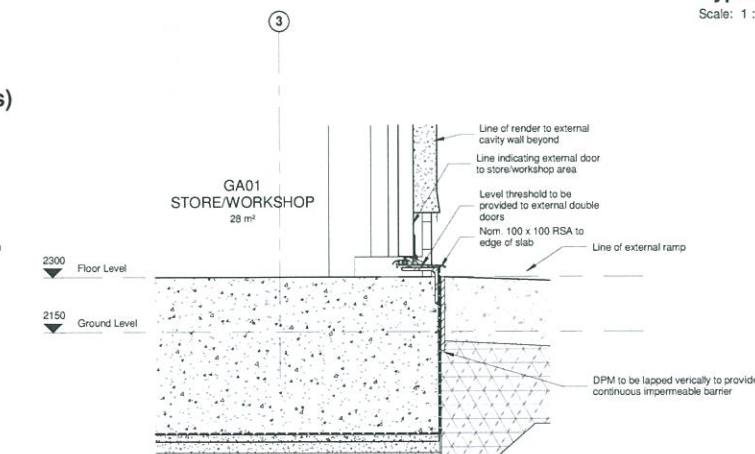
Window Type 1
Scale: 1 : 20



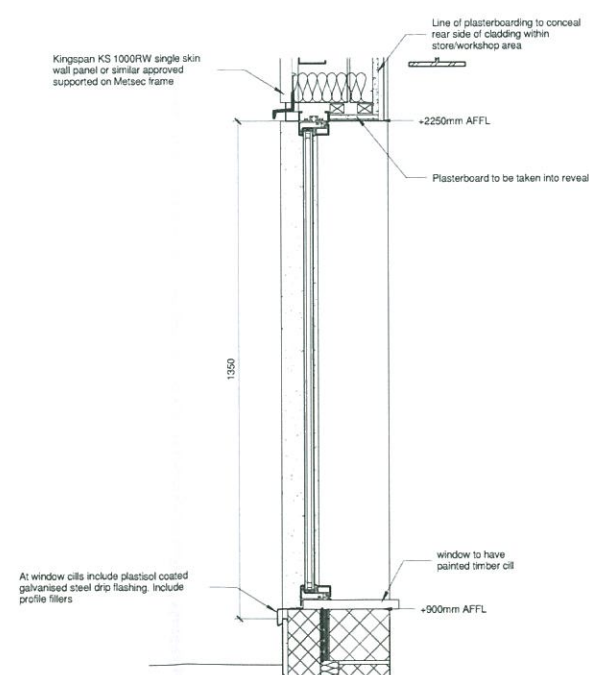
Typical Louvre Elevation
Scale: 1 : 20



Typical Louvre Section
Scale: 1 : 10



Section 8
Scale: 1 : 10



Typical window section
Scale: 1 : 10

EXTERNAL WINDOWS

GENERAL SPECIFICATION:

- All ironmongery to opening light windows is to be brushed stainless steel to match door ironmongery.
- All opening lights are to be provided with lockable handles.
- Trickle ventilators to be designed by the window sub-contractor to provide background ventilation in accordance with Approved Document F.
- For window numbers, see proposed elevations.
- This drawing is for architectural integration purposes only. the specialist window sub-contractor shall produce workshop drawings and submit to the Architect for comment prior to manufacture.
- Refer to M&E Engineers details for ventilation requirements.
- Fabricator to site check openings prior to manufacture.
- To critical locations provide toughened glazing in accordance with diagram 1, Approved Document N.
- Sealant to windows internally and externally are to be compatible with internal and external finishes.
- Window Sub-contractor to ensure adequate fixing detail for windows into turned block cavity details.
- For details of lintels refer to Structural Engineers details.
- All external windows are to be fully sealed double glazed units supplied in a UPVC frame. Exact specification to be confirmed with the window Sub-contractor.
- All glazing units are to achieve a u-value of 1.6w/m2k. All units are to be internally beaded.

EXTERNAL DOORS

GENERAL SPECIFICATION:

- All ironmongery to be from single manufacturer. all ironmongery must be of clear contrasting colour to the door and frame
- Number of hinges to external doors to the specialist sub-contractors design to suit the height and weight of the doors.
- All dimensions are approximate and subject to site check by sub-contractor prior to fabrication of door and frames.
- Include anti-finger trap stiles.
- To critical locations provide toughened glazing in accordance with diagram 1, Approved Document N.
- Weather bar to be included to all external doors.
- Paint finished galvanised steel guard hoops with a restraining catch will be provided to all external doors.

Notes

All dimensions indicated are nominal.
structural openings are to be fully checked on site prior to manufacture.



PRELIMINARY

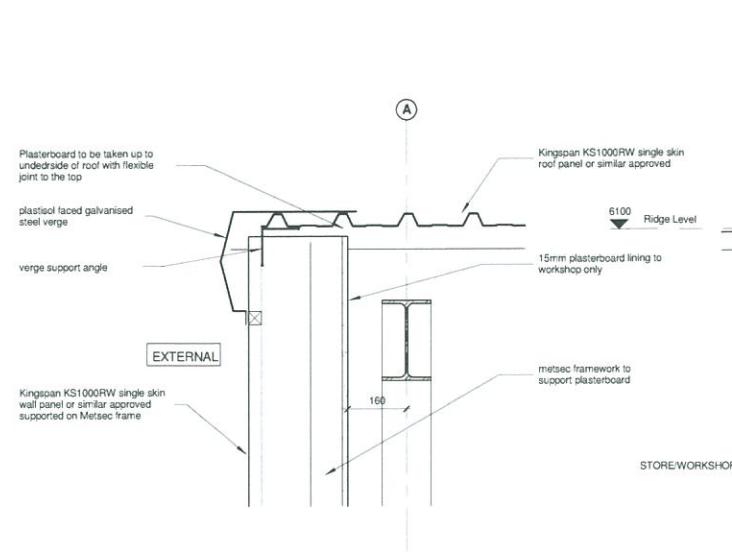
Rev.	Revision description	Drawn	Checked	Date
P3	Levels amended to suit revised position of building	AJ	NM	09.09.13
P2	Levels amended to suit revised location of building	AJ	NM	09.08.10
P1	Preliminary issue of drawing	AJ	NM	11.05.10

lovelock mitchell
3 Stanley Street Chester CH1 2LS
Tel +44 (0) 1244 404321
Fax +44 (0) 1244 404340
e-mail admin@lovelockmitchell.com
web www.lovelockmitchell.com

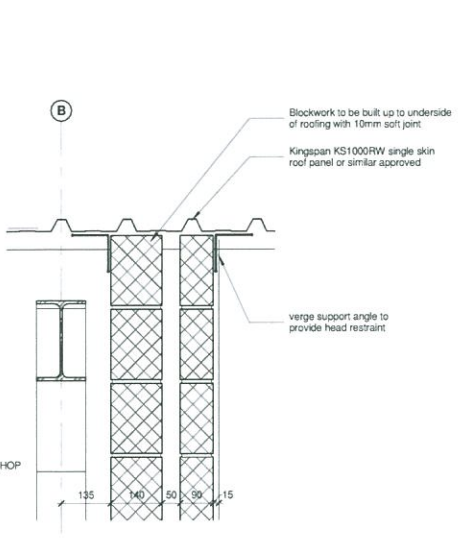
Project
British Lines LOx Store Gibraltar

Title
External Openings and Door & Window Details

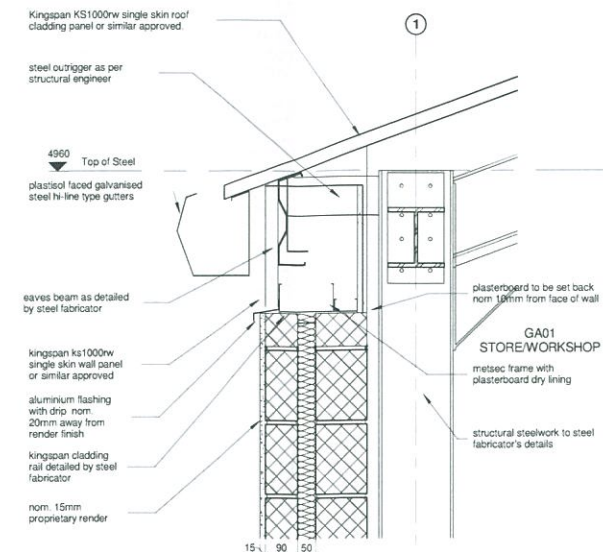
Scale @ A1	Checked By	Date
As indicated	NM	03/18/10
Job No.	Sheet No.	Rev.
08-49	500	P3



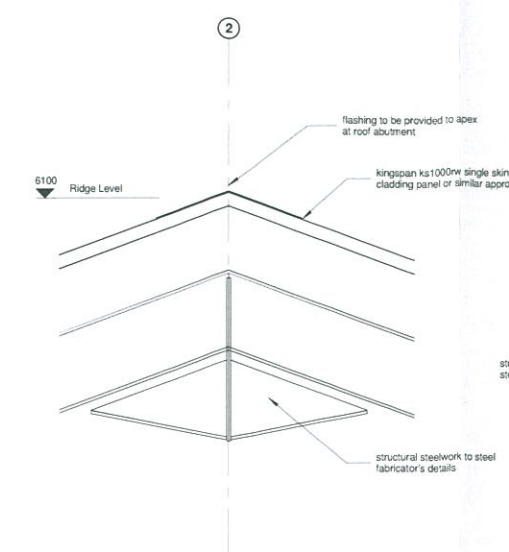
Detail A
Scale: 1 : 10



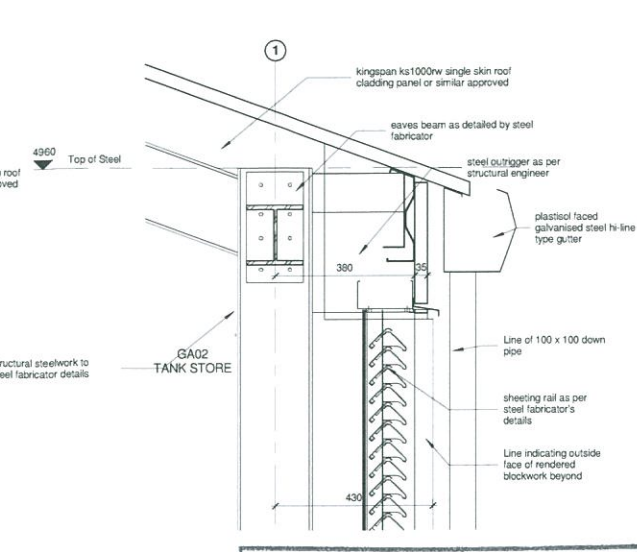
Detail B
Scale: 1 : 10



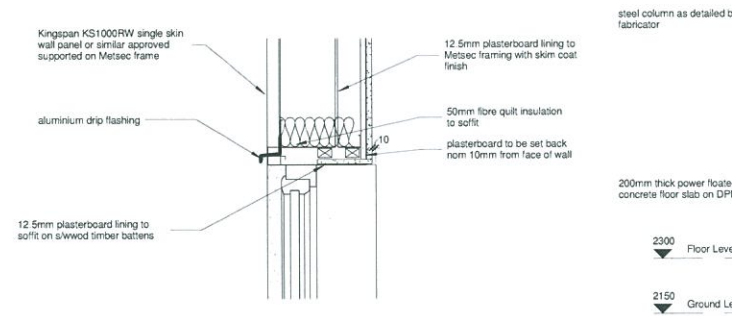
Detail C
Scale: 1 : 10



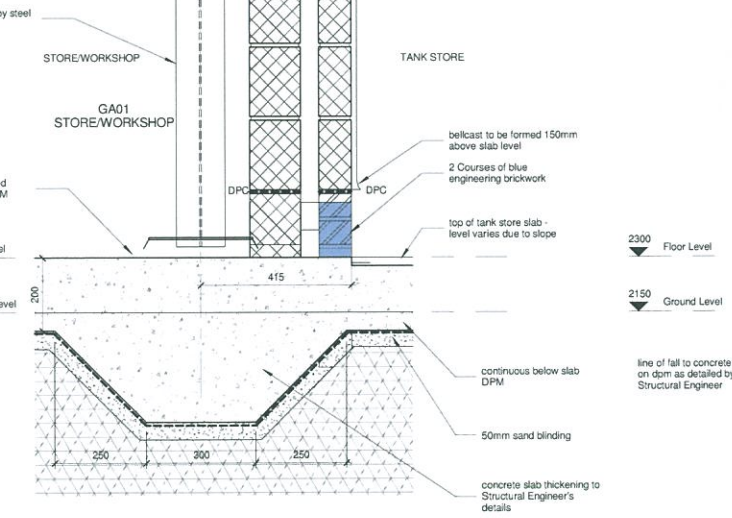
Detail D
Scale: 1 : 10



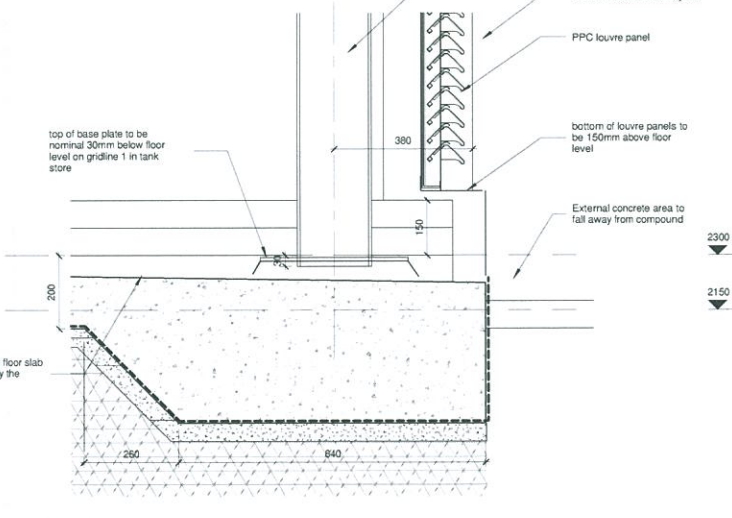
Detail E
Scale: 1 : 10



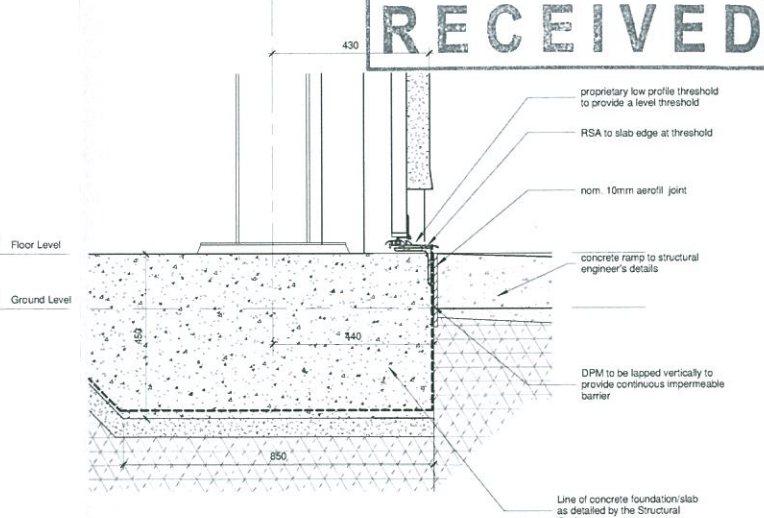
Detail F
Scale: 1 : 10



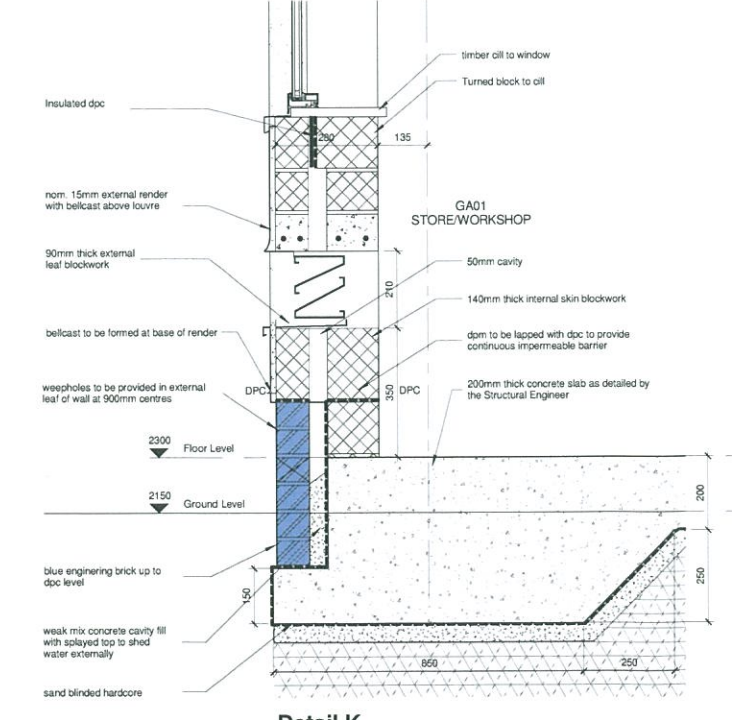
Detail G
Scale: 1 : 10



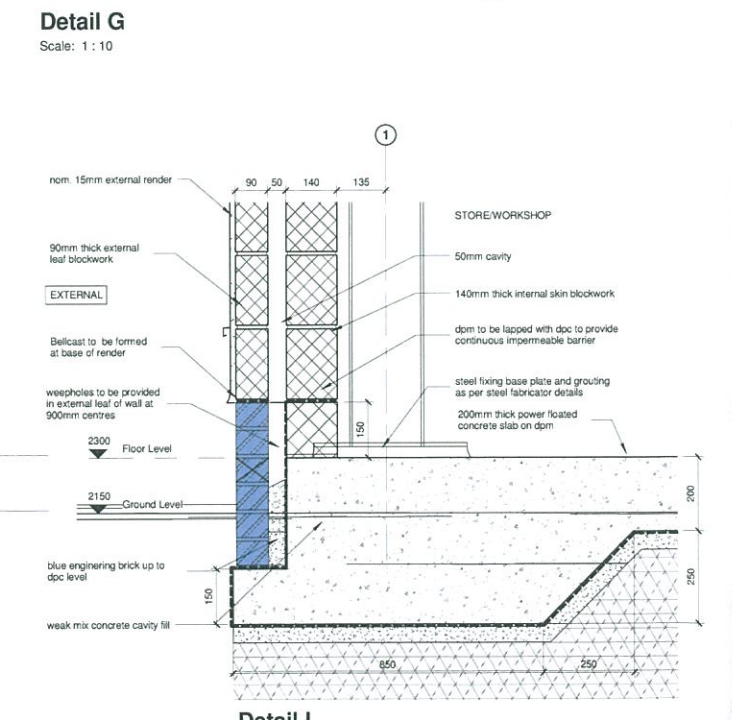
Detail H
Scale: 1 : 10



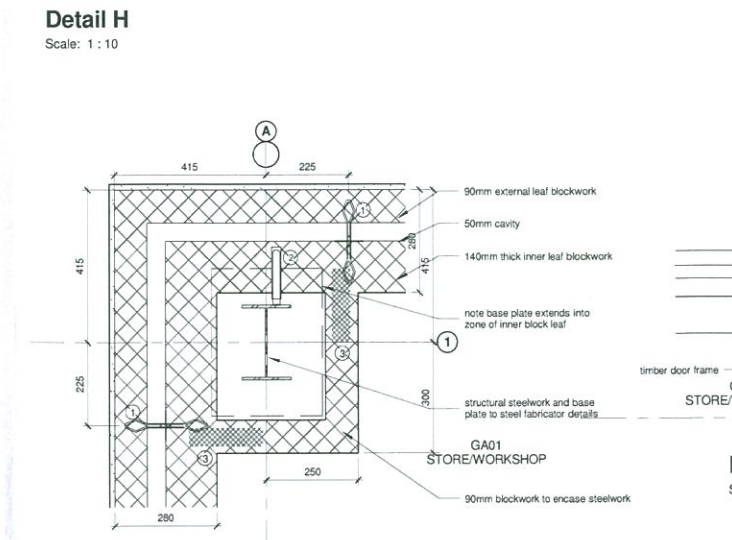
Detail J
Scale: 1 : 10



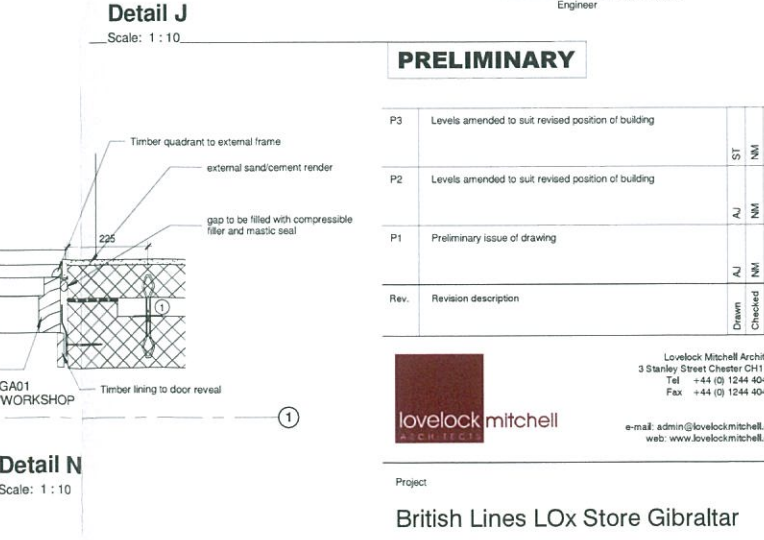
Detail K
Scale: 1 : 10



Detail L
Scale: 1 : 10



Detail M
Scale: 1 : 10



Detail N
Scale: 1 : 10

DRAWING LEGEND

- ① Acon cavity wall tie Type ST1 - 225mm long
- ② Acon restraint fixing Type PPB - 150mm long with debonding sleeve
- ③ Expanret reinforcement 200mm long

Notes:

- Where ties clash they are to be positioned in alternate courses
- Where ties are fixed to steelwork they are to be offset from the centreline to allow fixings to be made into the web of the steel
- At door and window jambs ties are to be max of 225mm vertically
- Expanret reinforcement width is to be 40mm less than the width of the wall
- Ties are to be fixed to steelwork using self tapping screws



**TOWN PLANNING AND
BUILDING CONTROL**

18 MAR 2014

RECEIVED

PRELIMINARY

P3	Levels amended to suit revised position of building	ST	NM	18/03/13
P2	Levels amended to suit revised position of building	AJ	NM	09/08/10
P1	Preliminary issue of drawing	AJ	NM	13/05/10
Rev.	Revision description	Drawn	Checked	Date

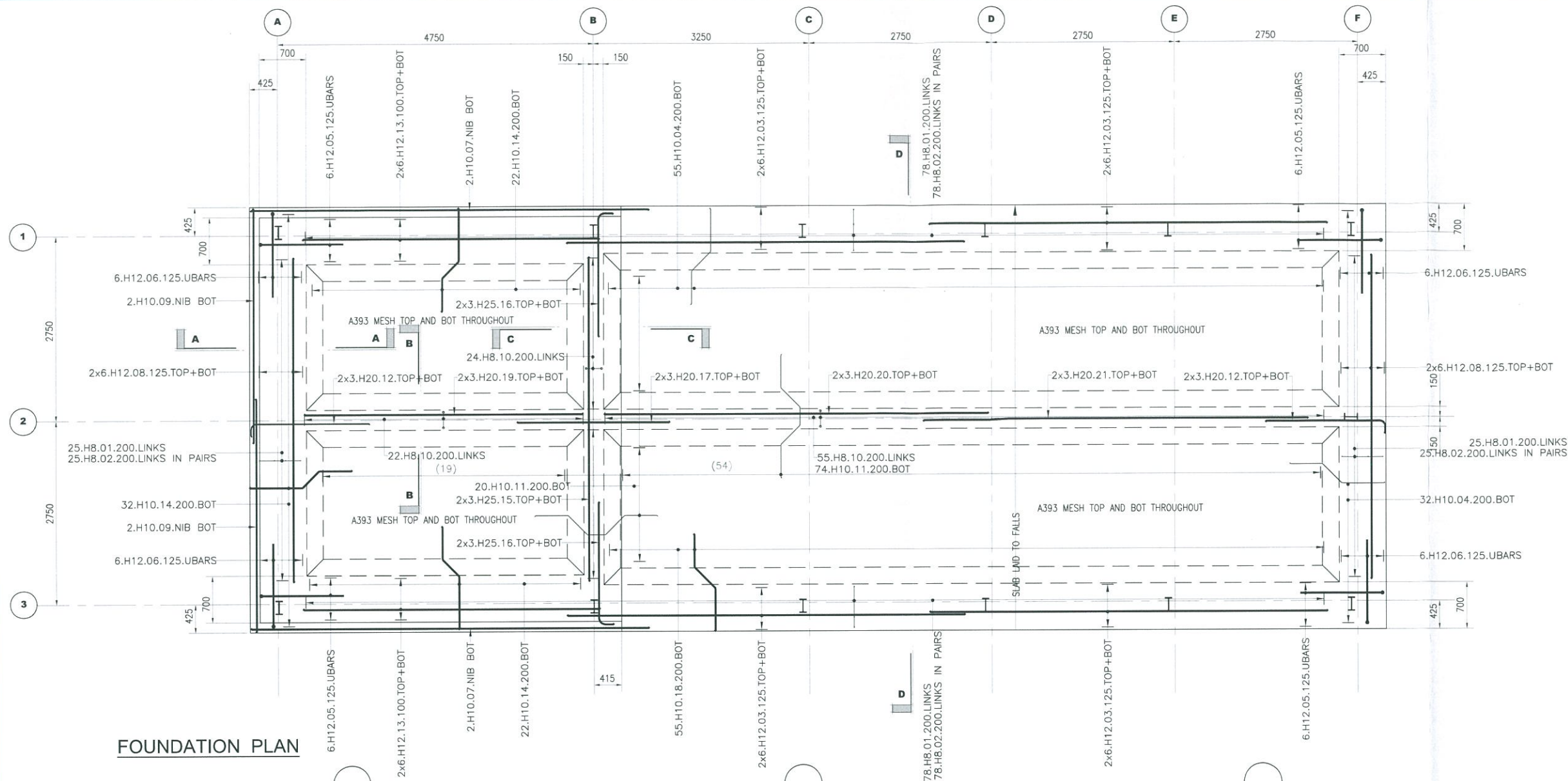
lovelock mitchell
ARCHITECTS

Lovelock Mitchell Architects
3 Stanley Street Chester CH1 2LS
Tel +44 (0) 1244 404321
Fax +44 (0) 1244 404340
e-mail: admin@lovelockmitchell.com
web: www.lovelockmitchell.com

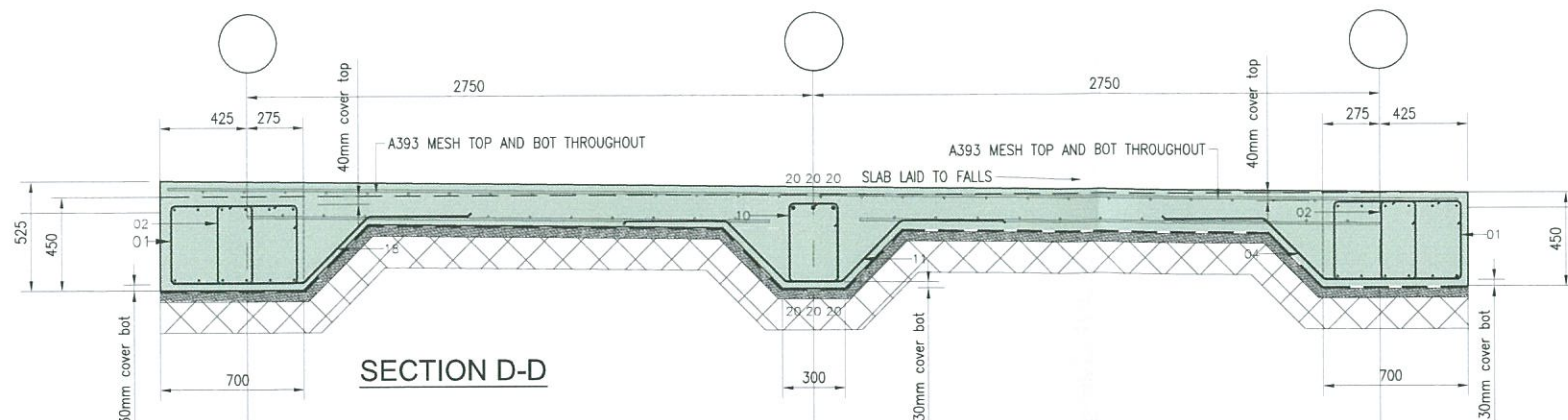
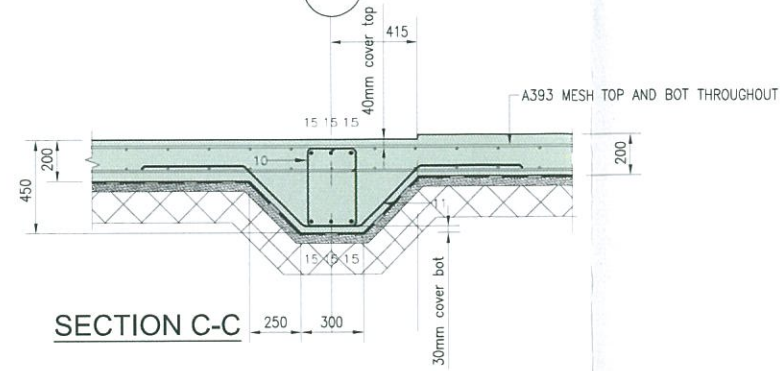
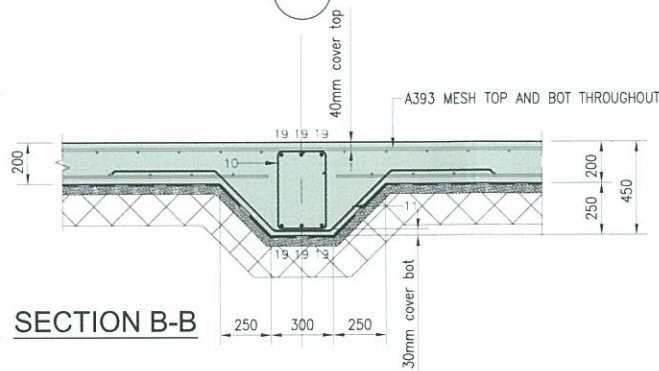
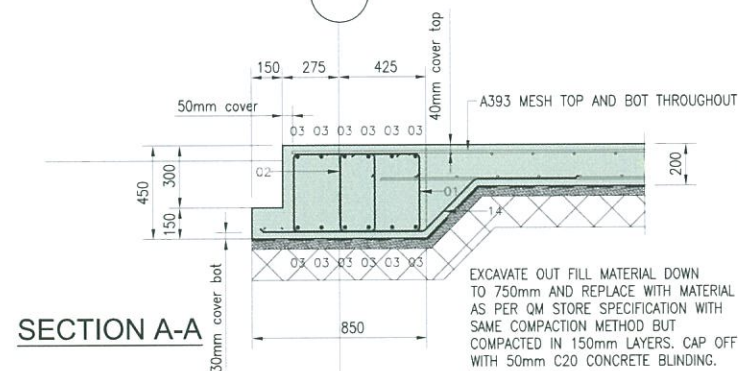
Project
British Lines LOx Store Gibraltar

Title
Section Details

Scale @ A1	ST	Checked By	Date
1 : 10	ST	NM	18/03/10
Job No.	Sheet No.	Rev.	
08-49	501	P3	



FOUNDATION PLAN



**TOWN PLANNING AND
BUILDING CONTROL**

18 MAR 2014

RECEIVED

B Section D-D revised 13.07.09 JP

A Issued for Construction 09.07.09 C.S.F

Revisions Date Revised By

Architects:

Lovelock Mitchell Partnership

Clients:

Government of Gibraltar

Project:

British Lines LOx Store

Drawing Title:

Foundation G.A AND RC Details

Date Scale 1:50 1:25 A2 Drawn

THIS DRG. MUST BE READ WITH DRG. No. AND SCHEDULES Note.

Job. No. 646-C Drg. No. 01 Rev. B

M.E. BELILO & PARTNERS

CONSULTING ENGINEERS

2/1 ENGINEER LANE GIBRALTAR

TEL (350) 79548 FAX (350) 72293 E-mail: belilo@belilo.gi

FOR CONSTRUCTION